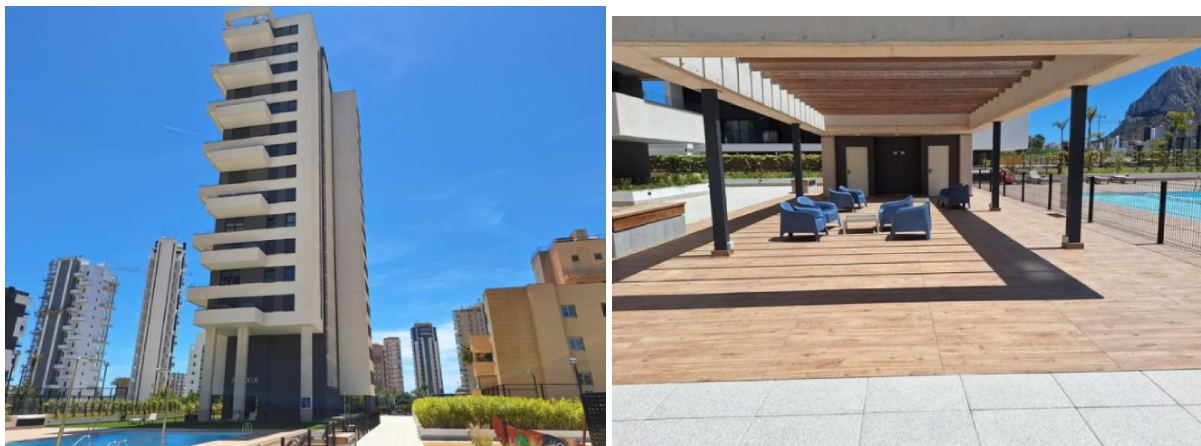


apartment for sale Calpe, Marina Alta



Exclusive Residence by the Mediterranean in Calpe~~Discover a unique opportunity to live in a privileged enclave of Calpe, where contemporary design merges with nature. This residential project stands out for its avant-garde and sustainable architecture, with undulating lines that harmoniously integrate into the environment, offering a sophisticated living experience by the sea.~~The residence is located on the third floor of a modern building and boasts 113 m2 of constructed space, featuring a living room with an open-plan modern kitchen, 3 bedrooms, 2 high-quality bathrooms with white resin showers and screens, as well as 2 terraces totaling about 30 m2 offering panoramic views of the Mediterranean and the Natural Park of Salinas. It also includes a private underground parking space and storage room, providing convenience and security.~~Just 200 meters from Arenal beach and a few steps from the fishing port, you will enjoy golden sand, the imposing presence of the Peñón de Ifach, and a vibrant lively environment. All surrounded by services, shops, medical centers, leisure options, and a varied gastronomic offer.~~The natural light, sea breeze, and tranquility of this setting will make every day a unique experience. A residence that combines elegance, functionality, and an unbeatable location, designed for those seeking quality of life by the sea.~~Request more information and take the first step toward your dream home in Calpe.

property details

| | |
|--------------------|-----------------------------|
| Spanishestate id: | 6354702 |
| reference:: | 240645__COMPLEX__364 |
| close to/ located: | Calpe |
| region: | Marina Alta |
| property type: | apartment |
| rooms: | 2 |
| property surface: | 162 m2 |
| surface plot: | - m2 |
| price: | € 539.000 |

contact

| | |
|--------------------|-------------------------|
| real estate agent: | Quo Inmobiliaria |
| name: | not available |
| spreek: | not available |
| telefoon: | +34633444028 |