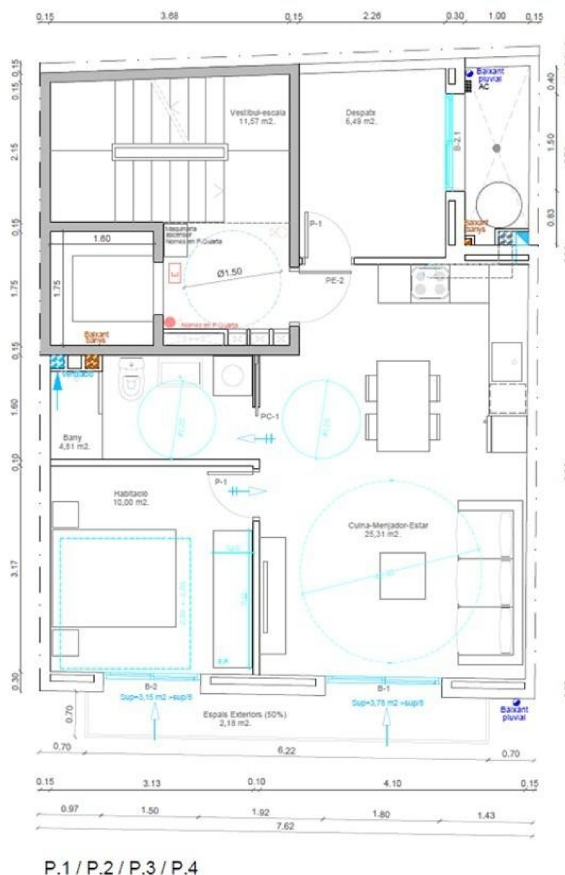
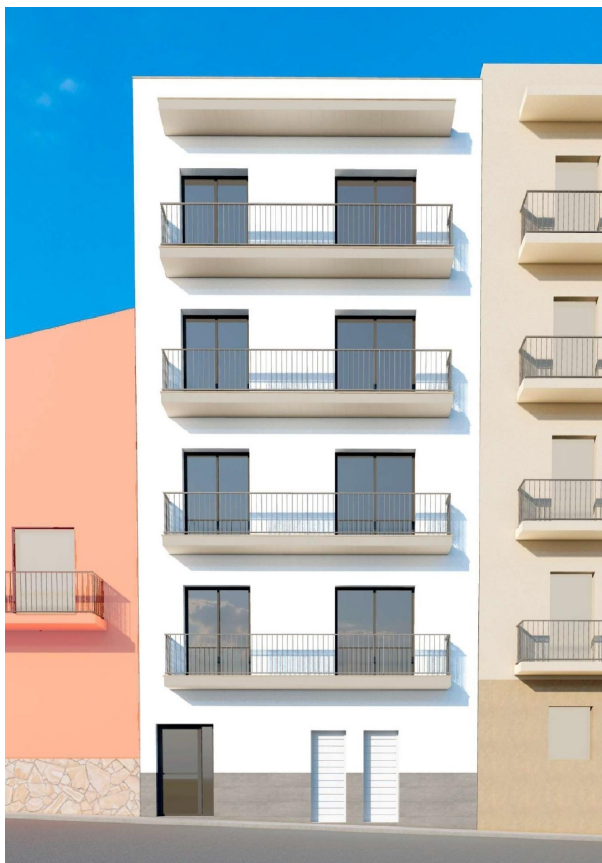


apartment for sale L'ametlla De Mar, Baix Ebre



P.1 / P.2 / P.3 / P.4

Last available unit with lift in the centre of l'Ametlla de Mar!~For sale: the last available 55 m2 apartment in an exclusive building with only four homes—one per floor—located right in the heart of the charming fishing town of l'Ametlla de Mar. ~Situating on the fourth floor, exterior, with lift, the flat consists of a bright livingdining room with access to a large balcony, openplan kitchen, one double bedroom with balcony access, an interior office or multipurpose room, a full bathroom and an open interior gallery. From the balcony you can enjoy pleasant views of the Pixavaques ravine and the mountains of Tivissa, in a peaceful natural environment.~Price: €189,900~Optional storage room on the ground floor: €15,000~Perfect for storing bicycles, prams or beach and sports equipment—especially practical in a coastal setting like this.~Features and equipment: ~Aluminium exterior carpentry with double glazing, white lacquered interior carpentry, porcelain floors, kitchen with COMPACT worktops, highquality taps, atherothermal hotwater system and preinstallation of ducted air conditioning. The building has a lift.~Unbeatable location:~On the same street as the health centre (CAP), 500 m from the train station and very close to pharmacies, shops, public parking and all services. Pixavaques beach is just a five-minute walk away, with access to numerous coves along the coast.~Last unit available!~Contact us now and book your home in one of the most soughtafter areas of the Costa Dorada.~More properties on the website finquesmar.es

property details

contact

Spanishstate id: **6362161**
reference:: **27-29112**
close to/ located: **L'ametlla De Mar**
region: **Baix Ebre**
property type: **apartment**
rooms: **2**
property surface: **55 m2**
surface plot: **- m2**
price: **€ 189.900**

real estate agent: **Finquesmar Serveis**
Inmobiliaris SI
name: **not available**
spreekt: **not available**
telefoon: **+34977493836**