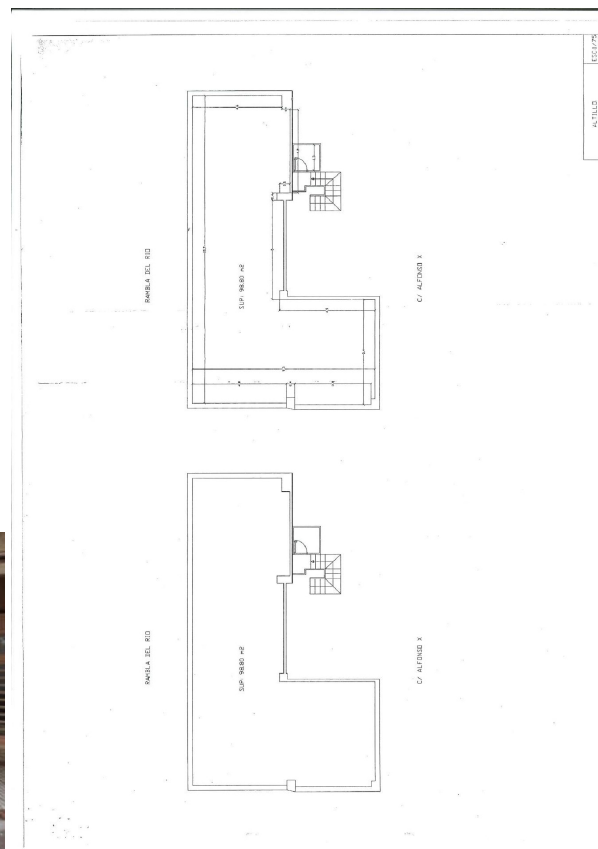


commercial premise for sale Cheda, Arzúa



A unique opportunity to establish your business right in the heart of Elche.~This spacious commercial property, with a total built area of 300 m2 and a usable area of 290 m2, is distributed across a 190 m2 ground floor and an additional 99 m2 mezzanine. ~With the capacity to accommodate up to seven separate spaces or areas, this property is ideal for a variety of commercial activities. It also features two restrooms, adding convenience to the daytoday operation of the business. Its prime location next to City Hall and on the riverfront makes this property not only a strategic location but also an attractive one for both customers and employees. Take advantage of this opportunity ~~Translated with DeepL.com (free version)

property details

Spanishestate id: **6372381**
reference:: **01507**
close to/ located: **Cheda**
region: **Arzúa**
property type: **commercial premise**
rooms: **7**
property surface: **300 m2**

contact

real estate agent: **Marhouse International**
name: **not available**
spreekt: **not available**
telephone: **+34966613870**

surface plot:

- m²

price:

€ 0