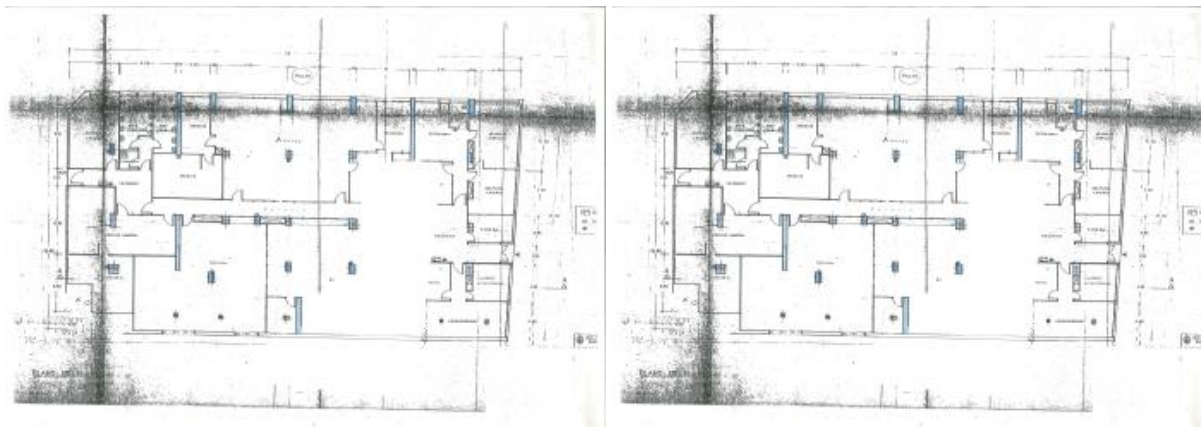


commercial for sale Chamberí-Vallehermoso, Madrid Capital



Unique opportunity in the heart of Chamberí! This large 1100 m² (800 m² usable) premises offers endless possibilities. Previously a supermarket and registry, this space without a street frontage has several main entrances at street level, which facilitates access and visibility. With ceilings up to 3 meters high and excellent ventilation, it is ideal to transform into housing or any other project you have in mind.

Located on Gaztambide Street, in a bohemian atmosphere and with a significant flow of people, this premises is strategically located near metro stations and hospitals. In addition, its corner location and smoke outlet offer additional advantages for any type of business. And best of all, we do not charge commission to buyers!

This property is perfect for those looking to invest in an area with great potential for growth and development. Do not miss the opportunity to acquire this unique space in one of the most emblematic neighborhoods of Madrid. Contact us for more information and to schedule a visit!

property details

| | |
|--------------------|------------------------------|
| Spanishestate id: | 6002437 |
| reference:: | - |
| close to/ located: | Chamberí-Vallehermoso |
| region: | Madrid Capital |
| property type: | commercial |
| rooms: | not available |
| property surface: | 881 m2 |
| surface plot: | - m2 |
| price: | € 3.600.000 |

contact

| | |
|-----------|------------------------------|
| name: | angel jimenez jusdado |
| spreekt: | Spanish |
| telefoon: | not available |