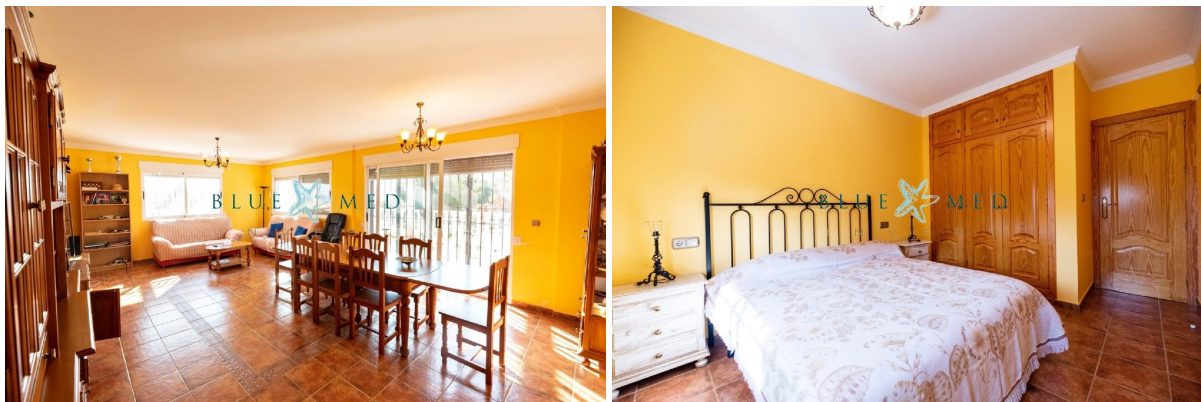


country house for sale Mazarrón, Bajo Guadalentín



Would you like to live in a fairly quiet country area with SPECTACULAR sunrises and sunsets and sea views from almost the entire house...?~BLUEMED presents this farm located in Leiva, in the countryside, but very close to Bolnuevo (5 minutes by car) and its beaches. Direct access by highway and highway.~-----
----- ~This house is distributed as follows:~650m2 built~500m2 useful~10,800 M2 plot~150m2 ground floor~100m2 attic~100m2 garage. (approximately)~Basement 150m2 (approximately).~The house is in good condition and has:~ Separate kitchen with a dining room.~ Lounge~ Dining room~ 04 bedrooms~ 02 bathrooms~ Terrace of 150m2 (approximate).~ Storage room~Rustic oven~ Equipped games room (basement).~* built with anti-flood system.*~Chalet surrounded by a lot of vegetation, trees, with a plot of 10,800 m2 and a tank for irrigation water. It is built on a loft where you can see a SPECTACULAR view of the "Sierras Morenas", the sea and even El Faro shining at night in Puerto de Mazarrón, in addition to the sky full of stars.** From most rooms you can see the sea. .
**~SERVICES~ 30m from Corvera airport~ 40m from San Javier airport~ 1 hour from Alicante airport~ 25m from Espacio Mediterráneo Shopping Center~ 20m from Cartagena~ 40m from Murcia~BEACHES~ 10m from the Percheles Beaches~ Less than 10m from the Puerto Beaches~ 5m from Bolnuevo~ Less than 10m from all supermarket chains, without having to enter an urban area.~FROM THIS WONDERFUL AND IMMENSE HOUSE YOU CAN HAVE AN IMPRESSIVE AND UNMATCHED VIEW OF THE MEDITERRANEAN SEA, THE AZOHIA, ISLA PLANA AND THE PORT.~*SOLD FULLY FURNISHED*~CALL US FOR MORE INFORMATION~~ (please use the form to respond)
~BLUE MED INVEST~AV. TIERNO GALVAN 59 - PUERTO DE MAZARRÓN

property details

Spanishestate id: **6258829**
reference:: **FINCACOLORADA**
close to/ located: **Mazarrón**
region: **Bajo Guadalentín**
property type: **country house**
rooms: **4**

contact

real estate agent: **Blue Med Invest**
name: **not available**
spreekt: **not available**
telefoon: **+34968595684**

property surface:	700 m2
surface plot:	- m2
price:	€ 425.000