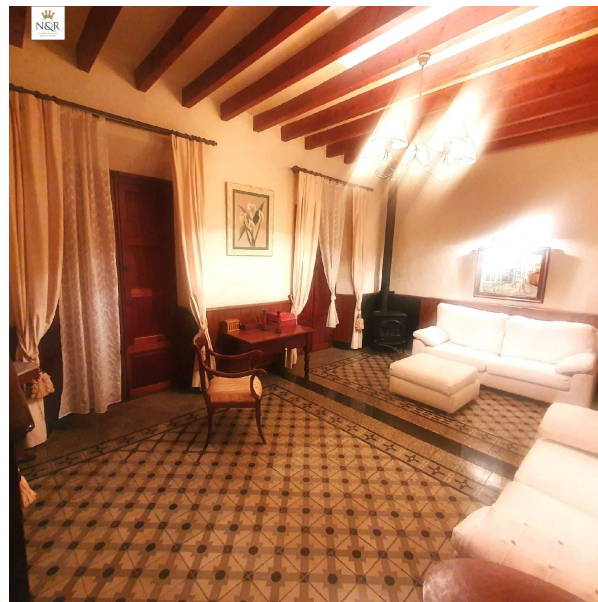
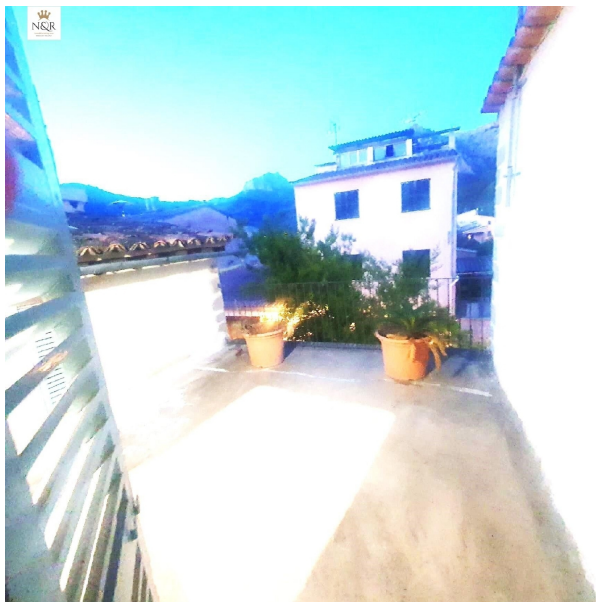


## house for sale Sóller, Tramuntana



IKA (please use the form to respond) . Spectacular modernist-style house for rent with hydraulic floors and high beamed ceilings in Sóller, built in 1910, just 300 meters from the beautiful town center.~~The property has 302 m2 of living space distributed as follows: a 34 m2 basement where the laundry room, house heating machinery, and 1 toilet are located. The exterior area includes 2 parking spaces and a 40 m2 terrace. On the mezzanine floor of 102 m2, there is an entrance hall, kitchen, a large dining room, and 1 double bedroom with a full bathroom. On the 1st floor of 90 m2, there is 1 bedroom, a living room, a bathroom, and a terrace. The 2nd floor of 80 m2 includes 2 double bedrooms and 1 bathroom.~~It is rented furnished. Pets are allowed.~~Sóller is a charming village in Mallorca, surrounded by mountains and orange groves. Its modernist architecture, picturesque port, and historic tram create a unique atmosphere. It is ideal for enjoying nature, local gastronomy, and cultural tourism.~~King Binissalem Real Estate is a family business founded by brothers Joan and Narcis Rosselló, specializing in rustic properties and village houses in the Balearic Islands. We excel at connecting buyers and sellers with all guarantees, and we know the local market's particularities perfectly. In the Islands, this is an added value.~~Whether you are looking for a village house, a rustic property in the countryside, a seafront home, or a city apartment, or if you want to sell or exchange your property, you are in the right place. We are dedicated to finding the best properties for each of our clients.

### property details

Spanishestate id: **6214779**  
reference:: **IKA00375-1**  
close to/ located: **Sóller**  
region: **Tramuntana**

### contact

real estate agent: **Inmobiliaria King**  
name: **Inmobiliaria King**  
**Inmobiliaria King**  
spreekt: **not available**  
telefoon: **+34648805866**

property type:	<b>house</b>
rooms:	<b>6</b>
property surface:	<b>306 m2</b>
surface plot:	<b>120 m2</b>
price:	<b>€ 0</b>